

# MUKI FF

## Front face jumbo for narrow veins

---



---

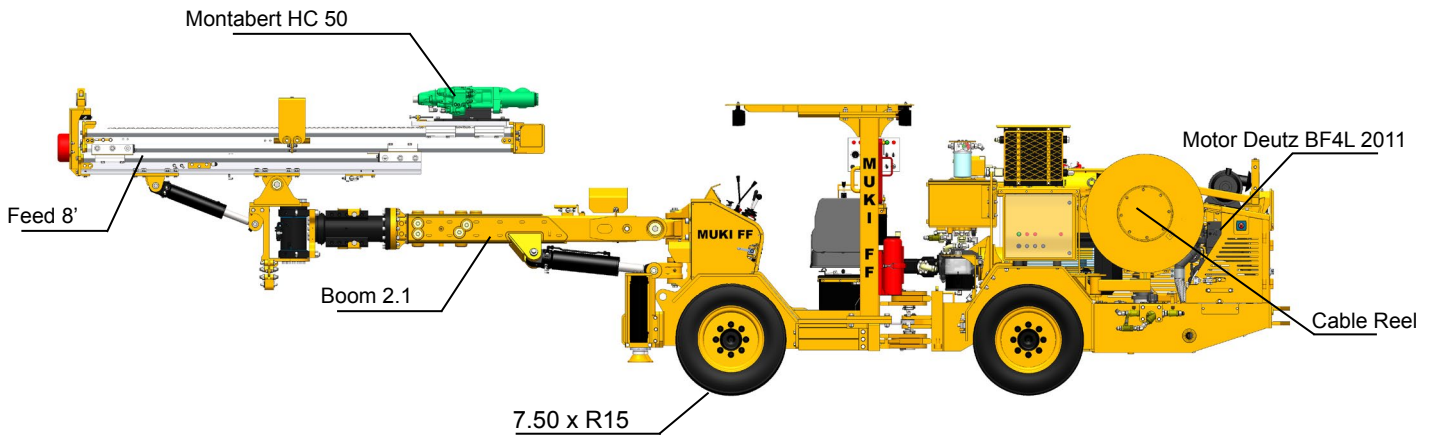
Front face drilling rig, electro-hydraulic, of 1.05 m width for tunneling in underground mining for small sections from 1.5 x 2.0 up to 3.5 x 3.5 m. Upper Drill option, for Cut & Fill method on sections from 1.5 m width at the bottom.

It comes with hydraulic boom of square section and feed with options for working with: Telescopic feed 8-10, 6-10 y 6-8 feet. Another option is Simple feed with options for working with drill rods 8 and 10 feet lengths. Equipped with Montabert drifter HC 50 (14 kW).

Chassis for heavy duty application, articulated 4WD, self-propelled diesel Deutz engine and Poclain hydrostatic transmission, electrohydraulic system for drilling.

---

# SPECIFICATIONS



## DRIFTER

• Model	Montabert HC50
• Percussion power	14 kW
• Percussion pressure	130 Bar
• Frequency percussion	62 Hz
• Rotation speed	0 - 195 rpm
• Rotation torque	415 Nm
• Hole diameter	33 - 64 mm
• Lub air consumption	83.3 l/s (to 7 bar)
• Lub oil consumption	0.8 cc/min
• Water consumption	25 l/min (to 8 bar)
• Shank adapter	R32 Female - T38 Male
• Weight	102 kg
• Length with shank	855 mm

## FEED

• Model	RE 2500 Series
• Advance drilling	Hydraulic motor and chain
• Telescopic feed 8-10	8-10 ft rods
• Options	
Telescopic feed 6-10	6-10 ft rods
Telescopic feed 8-10	6-8 ft rods
Simple feed 8	8 ft rods
Simple feed 10	10 ft rods

## BOOM

• Model	Boom 2.1
• Boom extension	1000 mm
• Angle lift	+45° / -20°
• Swing angle	± 30°
• Feed roll-over	360°
• Hydraulic cylinders	Parker
• Coverage area	18.4 m <sup>2</sup>

## ELECTRIC SYSTEM

• Electric motor	ABB - 55kW (75 HP)
• Voltages	380 - 440 - 550 - 690 - 1000 VAC
• Frequency	50 - 60 Hz
• Starting method	Star - Delta
• Option to 1000 VAC	Direct start
• Overload protection and ground fault	Schneider, Module VIGI
• Percussion horometer	In the control panel
• Phase sequence indicator	Siemens
• Battery charger	32 VAC, 300W, 13A
• Electric transformer	1.5 kVA
• Working lights	2X, LED N44, 50W, 6700 lm, 24 V
• Electric cable reel	60 m
• Electric cable	GGC - 3X2 - AWG (35 mm)
• Protection degree	IP 55



**CARRIER**

• Model	C22.1
• Diesel engine	Deutz BF4L2011, Tier II
• Power	55,1 kW @ 2300 rpm
• Exhaust catalyst	Standard
• Transmission	Hydrostatic
• Hydrostatic pump	Poclain, MSE 08
• Positioning pump	Rexroth
• Rear axle oscillating	± 8°
• Service brakes	Separate
• Emergency and parking brakes	SAHR (Spring Applied Hydraulic Release)
• Tyres	7.50 x R15
• Steering (articulated carrier)	±35°
• Hydraulic jacks	2 extendable front
• Battery	2x12 V, 90 Ah
• Electric system	24 VDC
• Gradeability	15%
• Trimming speed	flat – 7.0 kph 15% – 4.0 kph
• Canopy	FOPS / ROPS
• Trimming lights	8X, LED N44, 50W, 6700 lm, 24 V
• Centralized lubrication system	SKF
• Drilling lubrication system	SKF
• Automatic fire suppression system	ANSUL, 6 nozzles
• Fire extinguisher	1x5 lb, Type ABC
• High-pressure washing system	
• Reel grease gun	

**WATER AND AIR SYSTEM**

• Compressor	LE3 3 - 10 UV
• Maximum capacity	5.1 l/s (10.8 cfm)
• Working pressure	3 bar
• Water pump with hydraulic motor	Grundfoss, CR5 - 9
• Maximum capacity	6.9 m³/h
• Minimum inlet pressure	2 bar
• Bowman cooler	FG-120, 48.8 GPM, 20 bar

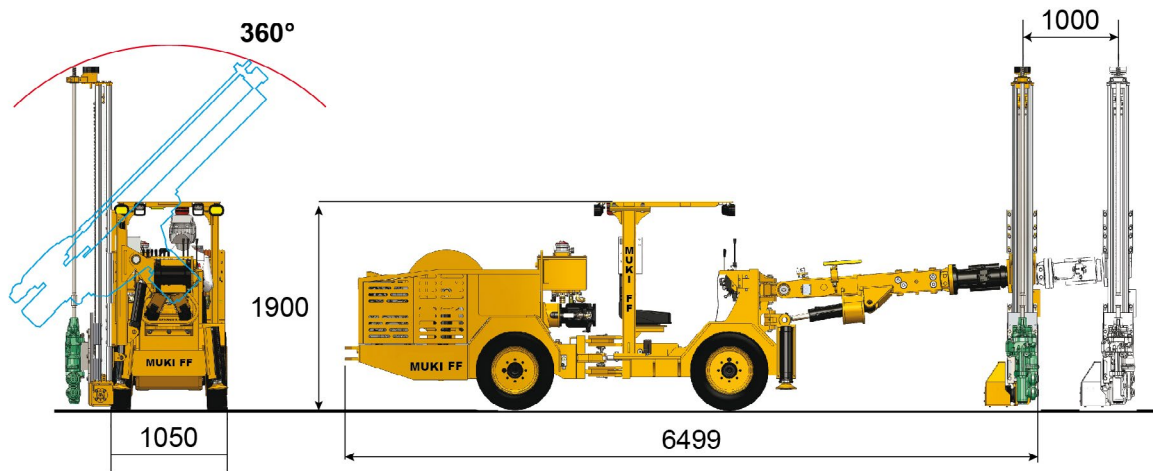
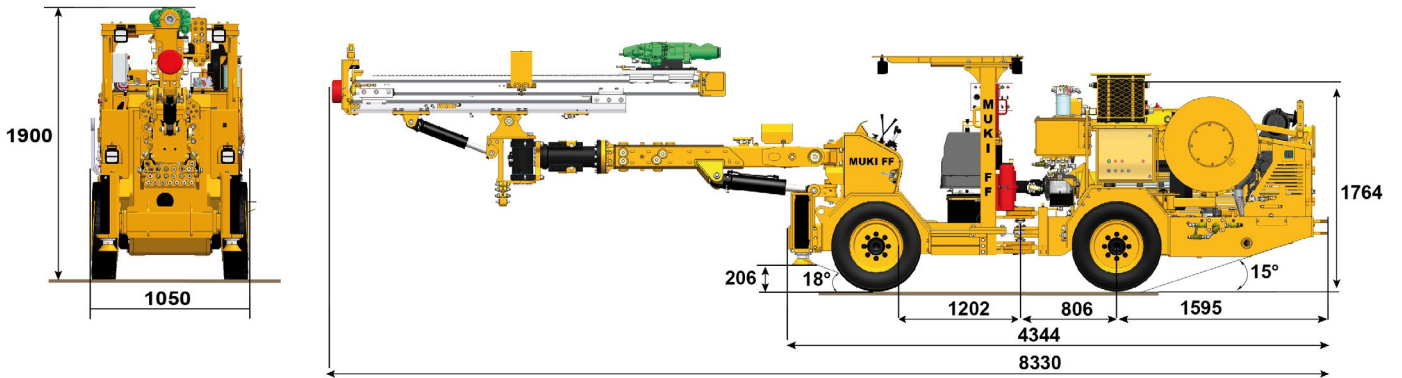
**HYDRAULIC CONTROL SYSTEM**

• Direct Control Valve	Parker KA-18
• Percussion pump (compensated pressure)	Rexroth A10VO71
• Rotation Pump	Parker, P315 A19
• Working pressure	180 bar
• Hydraulic oil tank volume	130 l
• Hydraulic return filter	Parker, 10µ
• Hydraulic pressure filter	Parker, 20µ
• Saturation hydraulic filter indicator	Parker
• Indicator of low oil	Hydac
• Indicator temperature oil	Hydac

## MUKI FF for Semimecanized Roof Bolting

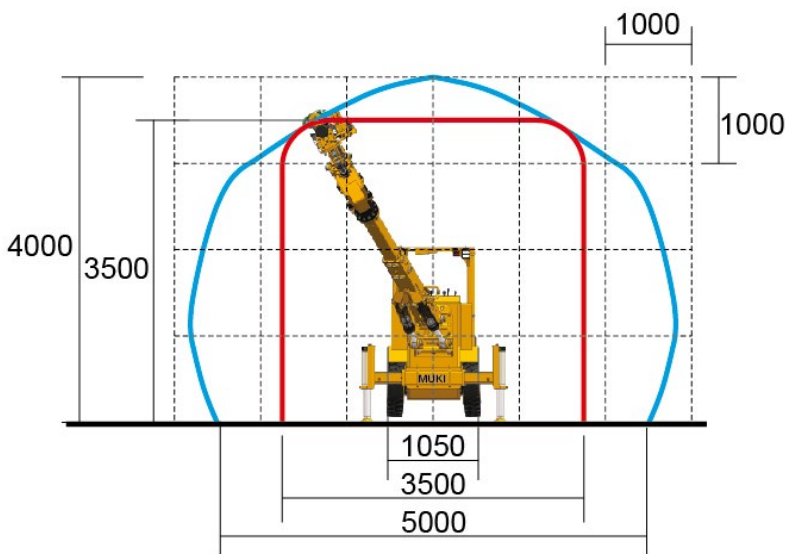


# DIMENSIONS (Muki FF with Telescopic Feed 8-10)



Total Weight	7,380 Kg.
--------------	-----------

## COVERAGE AREA



## TURN RADIO

