

Underground Mining Truck FAMT 15 Technical Data



总部地址：山东省青岛市市南区燕儿岛路10号凯悦中心办公楼3803室 邮编：266071

Office Add: Room 3803, Capland Center, No.10, Yan'erdao Road, Qingdao, Shandong province, China. P.C.:266071

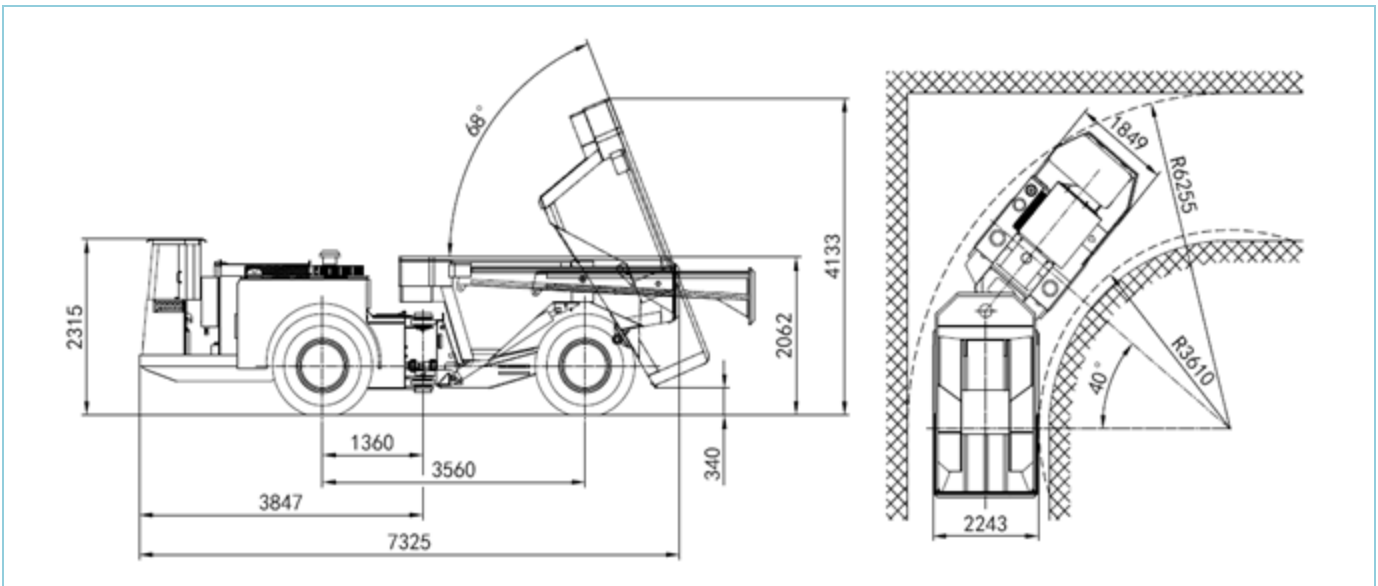
电话/Tel:+86(532)87900000 传真/Fax:+86(532)85777358

工厂地址：山东青岛市城阳区烟青路（正阳路南） 邮编：266109

Factory Add: Yanqing Road, Chengyang District, Qingdao, Shandong province, China. P.C.:266109

电话/Tel:+86(532)85784255 传真/Fax:+86(532)85784541

http://www.fambition.com mail:info@fambition.com



Engine	
Brand	DEUTZ Germany
Model	F8L413FW
Type	Air – cooled diesel engine
Power	136 Kw / 2300 RPM
Displacement Standard	Tier3 StageIII
Max Torque	665 Nm / 1500 RPM
Torque Converter	
Brand	DANA / USA
Model	C273
Type	Single – stage three elements with hydraulic pump
Transmission	
Brand	DANA / USA
Model	R32366
Type	Three gears, forward and reverse each
Axle	

Brand	DANA / USA
Model	16D2149
Type	Rigid planetary axle with Posi-Stop brake, with individual cooling circuit and separate brake cooling oil tank
Brake	
Design	Service brake, Parking brake
Type	Posi-stop brake, service brake and parking brake are integrated into one unit at wheel end, which is enclosed liquid multidisc brake, spring applied hydraulic release, with enforced cooling. Brake release pump is available.
Tire	
Model	17.5 – 25
Type	Professional mining tire
Hydraulic System	
Structure	Working circuit, steering circuit, braking circuit
Working & steering pump	Parker
Steering	Parker
Working Valve	Rexroth
Charging valve & Pedal Brake valve & throttle valve	MICO
Working Pump	P31B205HIOH17-25DAB07-1
Lifting Cylinder	125/63X1040-1620
Steering Cylinder	100/50X330-832
Operation	

Shift operation	Electrical control
Steering operation	Wheel, hydraulic control
Dumping operation	Pilot control
Safety	
Extinguisher	Dry 2*4 Kg
Lubrication	
Mode	Central lubrication
General Data	
Payload	15 000 Kg
Length	7325 ± 50mm
Width	2243 ± 50mm
Height	2315 ± 50mm
Bucket Capacity	7.5 m ³
Bucket lifting time	11 s
Dump Angle	≥ 68°
Wheelbase	3560 ± 15mm
Min Ground Clearance	≥ 300mm
Steering Angle	± 40 °
Inner Turning Radius	3610 ± 150mm
Outer Turning Radius	6255 ± 150mm
Approaching Angle	15°
Weight	
Operation Weight	15000 Kg
Front Axle (empty loading)	9500 Kg
Rear Axle (empty loading)	5500 Kg

Weight (full loading)	30000 Kg
Travel Ability	
Gear 1 FWD/RVS	0 – 4.9 Km/h
Gear 2 FWD/RVS	0 – 9.9 Km/h
Gear 3 FWD/RVS	0 – 19.5 Km/h
Grade Ability	≥15°
Max Traction Force	180 kN
Hydraulic Pressure	
Working pressure	20 MPa
Steering pressure	16 MPa
Braking Pressure	11 MPa
Cooling Pressure	0.05 MPa
Oil refilling Pressure	1.69 – 1.96 MPa
Fuel Tank	
Fuel Tank	180 L
Hydraulic Oil Tank	230 L (with Donaldson filter)
Electric System	
Working Voltage	24 V, DC
Battery	2 x 12V, free of maintenance
Generator	35A, 28V
Starter	5.5 Kw
Head light	2 x 35W
Rear light	2 x 35W